



£215,000

3 Bedroom End of Terrace House for sale
40 Harbin Road, Walton-on-Trent, Swadlincote



EweMove
SALES AND LETTINGS



Overview

Book to view via our EweMove website. What a fabulous home set in the popular village of Walton-on-Trent. With a generous sized modern fitted kitchen/diner, cosy living room with feature log burner and an amazing outdoor space! Must be viewed!



Key Features

- Attention - First Time Buyers
- Well Presented Throughout
- Good Size Family Gardens
- Private Driveway & Detached Garage
- Close to Local Schools - John Taylor Catchment
- Viewing Recommended
- Call NOW 24/7 or book instantly online to View





Inside this beautiful family home you will find a through lounge with feature log burner and patio doors opening out to the rear garden and patio area. The spacious kitchen/diner is fitted with a range of modern base and wall units with ample storage and includes a built in oven and gas hob, also having space for a washer, dryer and fridge/freezer.

Upstairs there are two generous sized double bedrooms and a single bedroom, family bathroom fitted with a white 3 piece suite, and there is also a separate wc. The loft has a pull down ladder and is part boarded for storage.

To the front of the property there is ample space to park at least 3 cars on the private driveway which leads to a detached single garage with power supply.

The garden benefits from a recently laid patio, and has a two tier raised garden laid with low maintenance astro turf. There is lighting on the patio which can be controlled wirelessly via Google Home.

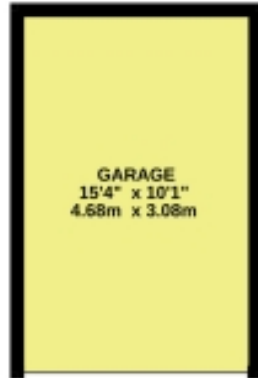


Enjoy the convenience of village life with Walton-on-Trent's array of amenities, including the renowned Swan Pub and an excellent Primary School, all within easy reach. Plus, with swift access to the A38 and nearby Barton Marina and Barton Under Needwood, including the outstanding John Taylor Academy, this location offers both tranquility and convenience.

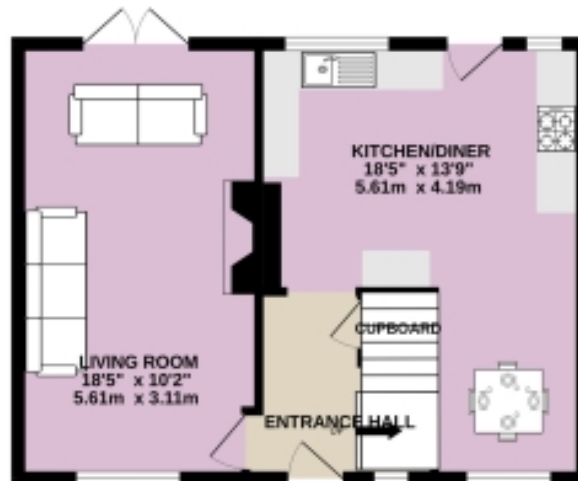
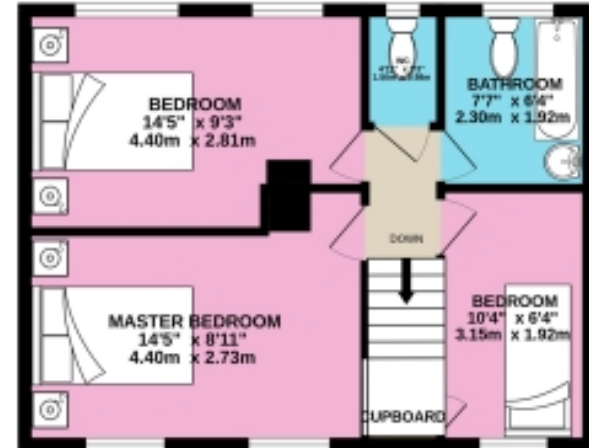
Don't delay - make this wonderful property your new home today!

Floorplans

GROUND FLOOR



1ST FLOOR

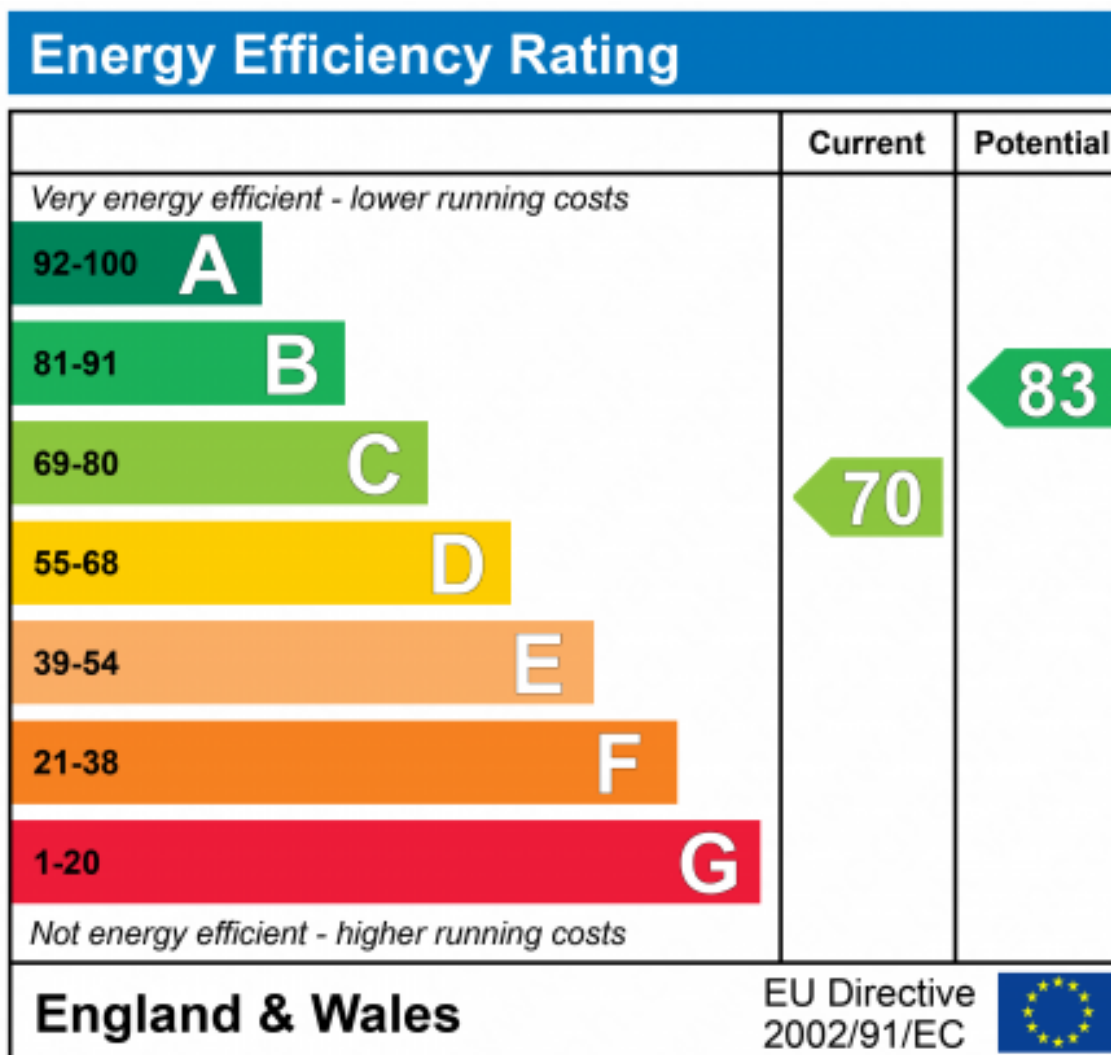


Whilst every attempt has been made to ensure the accuracy of the floorplan contained here, measurements of doors, windows, rooms and any other items are approximate and no responsibility is taken for any error, omission or mis-statement. This plan is for illustrative purposes only and should be used as such by any prospective purchaser. The services, systems and appliances shown have not been tested and no guarantee as to their operability or efficiency can be given.
Made with Metrolix ©2024

Floorplans



For illustrative purposes only. Decorative finishes, fixtures, fittings and furnishings do not represent the current state of the property. Measurements are approximate. Not to scale.
Made with Metropix © 2024





Marketed by EweMove Barton-Under-Needwood

01283 247076 (24/7)
barton@ewemove.com

